



presents

Using



# to Improve Communications, Relationships & Teamwork

Monday  
March 18, 2013

1:15 p.m. Sign-In  
1:30-4:30 p.m. Training



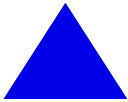
Wichita Falls Public Library  
600 11th Street  
Wichita Falls 76301  
[map](#)



3 CE / CPE Credits



Register at  
[http://NotTypical.org/  
upcoming-ce](http://NotTypical.org/upcoming-ce)



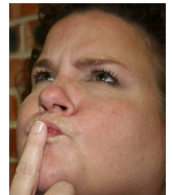
NTP Partner Library Staff  
\$15 advance registration  
\$20 regular registration

NonPartner Library staff  
\$25 advance registration  
\$30 regular registration

To qualify for advance registration rate, payment must be received by NTP **no later than Friday March 15**



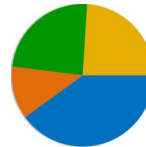
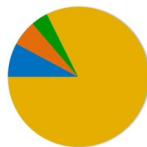
An Interactive Training Opportunity featuring NTP Executive Director **Carolyn Brewer**



True Colors® is a model of personality identification that's easy to understand, remember and apply. It distills the elaborate concepts of personality theory into a user-friendly, practical tool for fostering healthy productive relationships.

Using the True Colors® program, participants will

- Identify his/her own personality strengths
- Recognize that we're all different — yet alike!
- Consider the use of this knowledge to better understand others
- Analyze ways to adapt to another individual's personality style
- Apply True Colors® to interactions with patrons, colleagues, family and friends



## About the Presenter

In over 20 years as a consultant, manager & trainer, NTP Executive Director **Carolyn Brewer** has developed a reputation as a dynamic speaker who can share information while keeping participants involved, interested & — especially in the case of True Colors® — having fun while learning. In addition to being certified by the state of Texas in Staff Development & Training, she's also a Certified True Colors® Facilitator.

To date she has facilitated over 400 True Colors® sessions for libraries & other groups. She's a degreed librarian, a licensed social worker & recently became a licensed Private Investigator in the State of Texas.

